



MAXIMIZER 16763A



MAXIMIZER 16763A Model number: 31MXR16763AH18

3 beds • 2 baths • 1216 sq.ft. • 16' width • 76' depth

Our home building facilities invest in continuous product and process improvements. Plans, dimensions, features, materials, specifications and availability are subject to change without notice or obligation. Renderings and floor plans are representative likenesses of our homes and may differ from the actual homes. We invite you to tour a Home Center near you and inspect the highest value in quality housing available or call (575) 885-6146 to speak with a Home Consultant. Copyright 2017, CMH. All rights reserved.

<https://www.claytonhomesofcarlsbad.com>

**CLAYTON HOMES-
CARLSBAD**

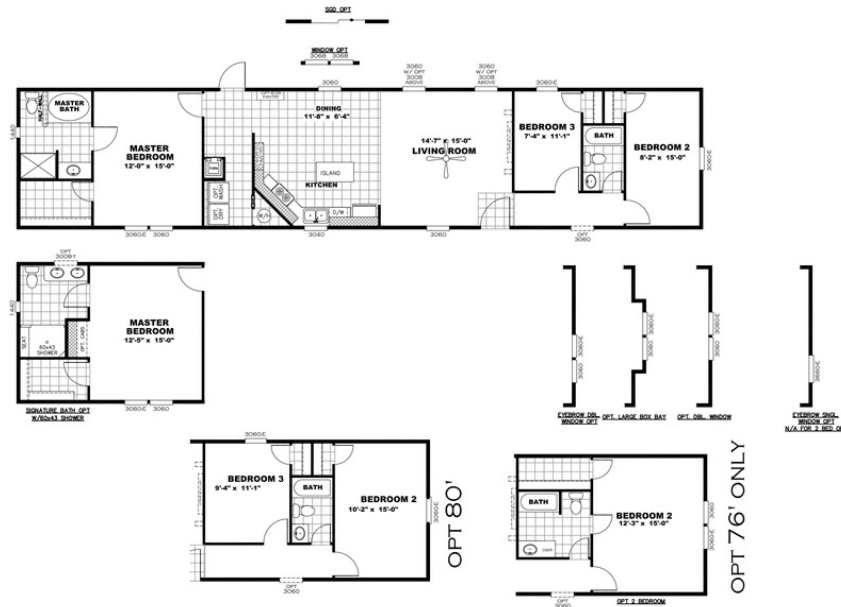
**3304 NATIONAL PARKS HWY
CARLSBAD, NM 88220**

Monday - Thursday: 9am - 7pm
Friday: 9am - 6pm
Saturday: 9am - 5pm
Sunday: Closed

(575) 885-6146



MAXIMIZER 16763A



DRAWING # 31S122

MODEL# MXR16763A-N

16'x76' MAXIMIZER

MAXIMIZER 16763A Model number: 31MXR16763AH18

3 beds • 2 baths • 1216 sq.ft. • 16' width • 76' depth

Our home building facilities invest in continuous product and process improvements. Plans, dimensions, features, materials, specifications and availability are subject to change without notice or obligation. Renderings and floor plans are representative likenesses of our homes and may differ from the actual homes. We invite you to tour a Home Center near you and inspect the highest value in quality housing available or call (575) 885-6146 to speak with a Home Consultant. Copyright 2017, CMH. All rights reserved.

<https://www.claytonhomesofcarlsbad.com>

CLAYTON HOMES-
CARLSBAD

3304 NATIONAL PARKS HWY
CARLSBAD, NM 88220

Monday - Thursday: 9am - 7pm
Friday: 9am - 6pm
Saturday: 9am - 5pm
Sunday: Closed

(575) 885-6146